

## Squiggle Fat Quarter Scrap Quilt

For Rotary Cutting and AccuQuilt

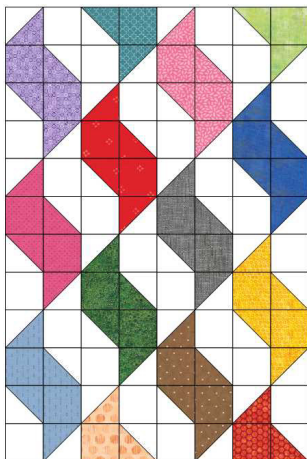
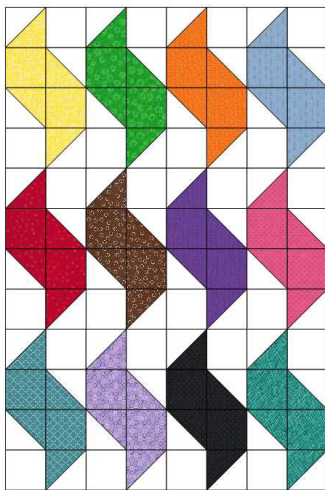
4" x 8" and 6" x 12"

Scan code to see video

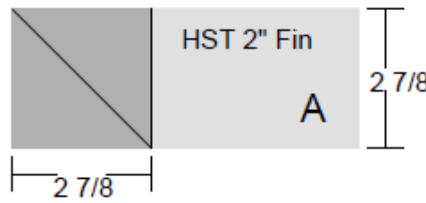
Block of the Day video



Video for this quilt



### 4" x 8" Finished Block



4 patches or 2 squares

4 patches or 2 squares

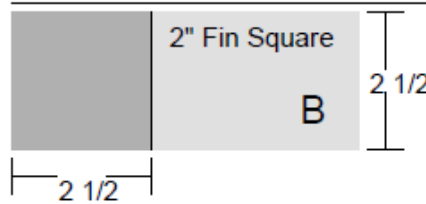
#### AccuQuilt

55063 or 55712 or 8" Qube Shape 5

#### To Make HST Two At A Time

Cut squares this size.

Do not sub cut.

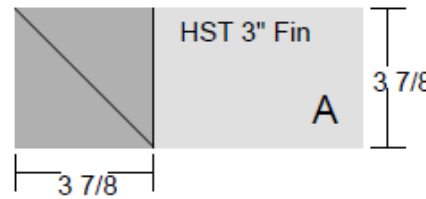


2 patches 2 patches

#### AccuQuilt

55059, 55709 or 55018 or 8" Qube Shape 2

### 6" x 12" Finished Block



4 patches or 2 squares

4 patches or 2 squares

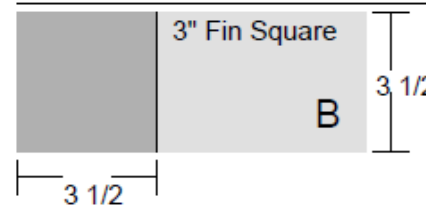
#### AccuQuilt

55009 or 55703 or 12" Qube Shape 5 or 6" Qube Shape 3

#### To Make HST Two At A Time

Cut squares this size.

Do not sub cut.

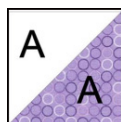


2 patches 2 patches

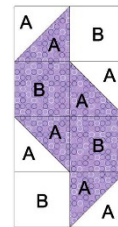
#### AccuQuilt

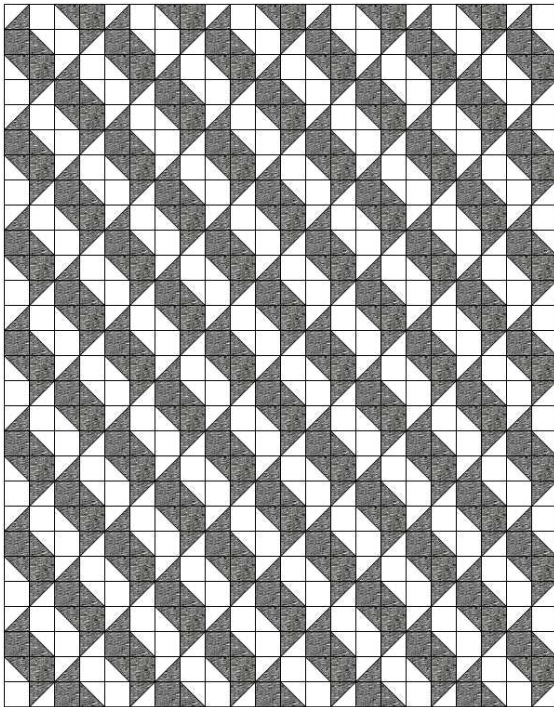
55006 or 55701 or 6" Qube Shape 1

1. Using the A patches or squares, make 4 HST.



2. Refer to diagram to assemble block.





### Squiggle Scrap Quilt

66" x 84" Finished

Block Size: 6" x 12" Finished

Number of Blocks: 77

Set 11 across and 7 Down

Alternating Set

### Fabric Requirements

#### Blocks:

- 20 Background fat quarters
- 20 Accent fat quarters

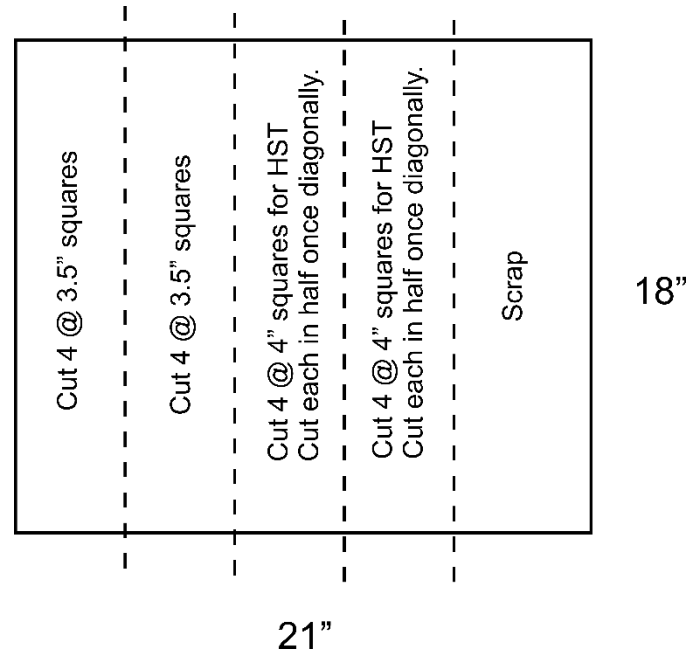
**Note:** 1 background and 1 accent fat quarter will be needed for 1 block only. You can substitute those 2 fat quarters for 1 strip @ 4" x 18" from each fabric."

**Binding:** 5/8 yd

#### Backing:

- 5 yds, Cut 2 lengths of 90 inches.
- Sew together with a vertical seam.

### Cutting Fat Quarters



### Pressing

Most of the seams I pressed to one side so they would interlock when piecing. The center horizontal seam I pressed open.

